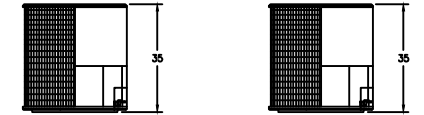
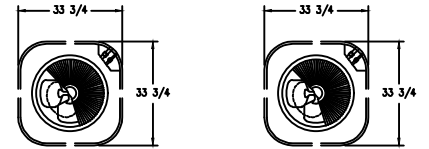
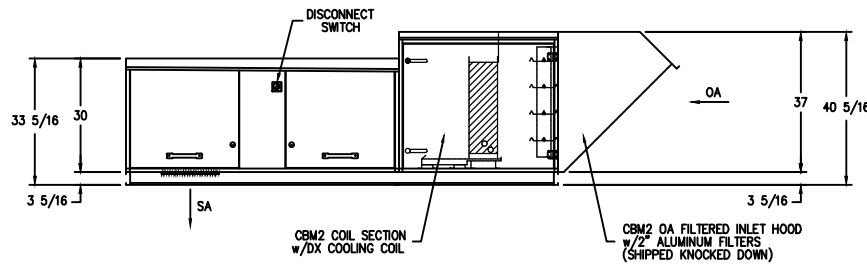
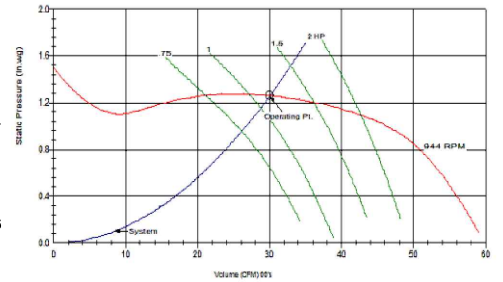
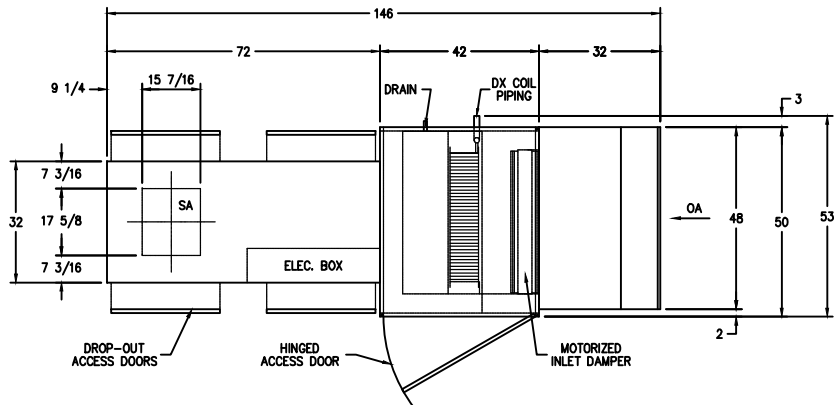
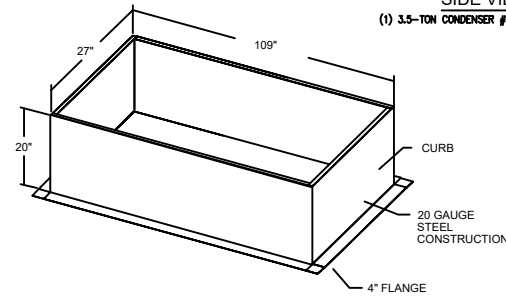


UNIT DESCRIPTION	
MODEL #	SF9-DX
WEIGHT	720 lb
DISCHARGE DIRECTION	DOWN
AIRFLOW (CFM)	3000
EXTERNAL SP	.25
TOTAL SP	1.26
FAN BHP	1.14
FAN RPM	944
MOTOR HP	1 1/2 HP
POWER SUPPLY	208/3/60
FLA (AMPS)	9.6
MCA (AMPS)	11.3
MOP (AMPS)	15
SELECTION DATA	
AIRFLOW	3000 CFM
ELEVATION	1033 FT
ENTERING DB/WB	93.9°F / 74.8°F
REQ'D LEAVING AIR DB/WB	0°F / 0°F
REQ'D CAPACITY	90 MBH
COILS PER BANK	1
FIN TYPE	5/8" 1.5" X 1.299" WAFFLE
FIN HEIGHT	24"
FIN LENGTH	34"
FIN MATERIAL	ALUMINUM .006 in.
TUBE MATERIAL	COPPER 0.020 in.
REFRIGERANT	R454b
LIQUID TEMP	110°F
EVAP. TEMP	56°F
LEAVING SUPERHEAT	5°F
COIL CIRCUITING	INTERLACE 2 CIRCUIT
COIL HAND	RIGHT HAND
CASING MATERIAL	16 ga. GALVANIZED
CONNECTION MATERIAL	COPPER
CONNECTION TYPE	SWT
COIL COATING	NONE
PERFORMANCE DATA	
MODEL	DXC03C13-24.00 X 34.00R
ROWS/FBI	3 / 13.0
TOTAL CAPACITY	91.3 MBH
SENSIBLE CAPACITY	72.0 MBH
LEAVING AIR DB/WB	72.2°F / 67.1°F
FACE VELOCITY	529.41 FPM
REFRIGERANT CHARGE	3.03 lbs
AIR PRESSURE DROP	0.46" WC
REFRIGERANT PRESSURE DROP	2.16 PSI
TOTAL FEEDS	4 FEEDS
TUBE VAPOR VELOCITY	1468 FPM
SUCTION CONNECTION	.875"
SUCTION LINE VELOCITY	1948 FPM
DISTRIBUTOR #1	501-2-1/4-2.5
DISTRIBUTOR #2	501-2-1/4-2.5
HOT GAS BYPASS CONNECTION	(1) PER DISTRIBUTOR
DRY WEIGHT	67.8 lbs.



(1) 3.5-TON CONDENSER #1; APPROX. 252 LBS. (1) 4-TON CONDENSER #2; APPROX. 243 LBS.



"IT IS THE RESPONSIBILITY OF THE ARCHITECT/OWNER TO ENSURE THAT THE HOOD CLEARANCE FROM LIMITED-COMBUSTIBLE MATERIALS IS IN COMPLIANCE WITH LOCAL CODE REQUIREMENTS."

"ALL EQUIPMENT IS UL LISTED COMPONENTS. NAKS HOODS ARE BUILT IN COMPLIANCE WITH: NFPA 96-6 (UL710) AND ARE RECOGNIZED BY ONE OR MORE OF THE FOLLOWING - NSF INTERNATIONAL -UL -OPENINGS ARE RECOMMENDED SIZES. DUCT OPENINGS TO BE CUT AND DUCTS INSTALLED IN FIELD."



FAN UNIT NO.	FAN UNIT MODEL #	EXHAUST FAN								SUPPLY FAN									
		MODEL	TAG	CFM	S.P.	RPM	H.P.	Ø	VOLT	FLA	BLOWER	HOUSING	TAG	CFM	S.P.	RPM	H.P.	Ø	VOLT
-	SF9-DX SF-1	-	-	-	-	-	-	-	-	-	SF9-DX	SF-1	3000	0.25	944	1.5	3	230	-

REVISIONS		NORTH AMERICAN ELECTRICAL EQUIPMENT	
CONTRACT NO.	ITEM NO.	172 READER CIRCLE	104-1100-010-0307
LOC.	DATE	12010A, 01042 0000	FAX 440-387-2700
EQUIPMENT SCHEDULE		DWG# -	
SHEET		OF -	